



# 2019 ANNUAL REPORT

*[www.washingtonrkd.org](http://www.washingtonrkd.org)*

---

# DIRECTOR'S STATEMENT

*We are at the highest point we've been. Congratulations to everyone!*

In 2019, the WRC&D was busier than ever. We report our success in so many ways. If we measured our success in acres we could report hundreds of non-federal land treated for resilience to wildfire, hundreds of acres treated while we provided training during Prescribed Fire Training Exchanges (TRES), multiple acres of riparian habitat restored and we made significant progress to complete environmental planning on almost 100,000 acres of forest land in the Okanogan Wenatchee National Forest.

We also measure our success in miles. This might be the 1.7 miles of habitat that our Yakima Tributaries Access and Habitat Program (YTAHP) made available for salmon and steelhead. Or, the overall hundreds of miles of streams that the program returned salmon to since we started the project in 2002. We could also measure the countless miles driven by WRC&D staff and partners in order to convene and work collaboratively on some of Washington's more complex problems like wildfire, climate resilience, and salmon recovery.

Financial success for WRC&D and our partners continues to show. In 2019, WRC&D efficiently developed and utilized limited financial resources to support our work. We dedicated 95% of our revenue to program and partner support. This overall efficiency ensures that better outcomes and partner capacity take priority. Despite a low administrative cost, we still increased our administrative capacity. We now have two people on staff dedicated supporting our office finances, and agreements.

The WRC&D reports acres improved, stream miles restored, communities assisted, and dollars well managed as metrics of success. More deeply, our mission is about helping our partners connect and work together so that their own metrics improve.

This last year, thanks in part to support from The Nature Conservancy's Office of Diversity, Equity, and Inclusivity as well as their Washington Chapter, we were able to launch a partnership with Sachamama, The Washington Fire Adapted Communities Learning Network partners, and locally based community organizations in order to increase our impact and partnership with Latinx community organizations. The project is called the Climate Innovation Lab and involves activating community, sharing information about Fire Adapted Communities practices, and building partnerships that can work together on wildfire and other environmental challenges now and in the future.

Moving into 2020, we will continue to build partnerships that increase capacity and locally based solutions to natural resource challenges. One of the WRC&D's most important functions is to add to local capacity through facilitation, collaboration, and developing financial resources for communities. You can help by donating to the WRC&D, volunteering to be a board member, or by engaging and helping with one of our projects. Learn more about us at [www.washingtonrcd.org](http://www.washingtonrcd.org) or call (509) 571 1722

*Ryan Anderson*  
*Executive Director*





# BOARD OF DIRECTORS

## **FRANK HENDRIX, PRESIDENT**

North Yakima Conservation District

## **REESE LOLLEY, VICE-PRESIDENT**

The Nature Conservancy

## **TOM COLEMAN, SECRETARY/TREASURER**

Rabbitbrush Ranch LLC

## **ANNA LAEL, DIRECTOR**

Kittitas County Conservation District

## **JOHN "KEN" TOLONEN, DIRECTOR**

Master Gardeners, Yakima

## **PHIL RIGDON, DIRECTOR**

Yakama Nation

## **TERRY LAWHEAD, DIRECTOR**

## **MIKE TOBIN**

North Yakima Conservation District

## **BRADY KENT**

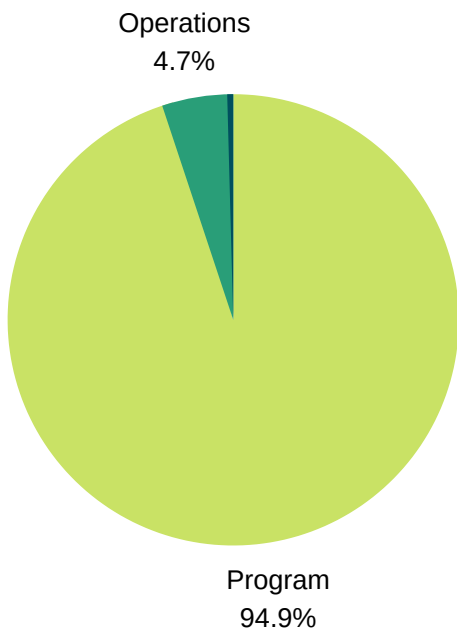
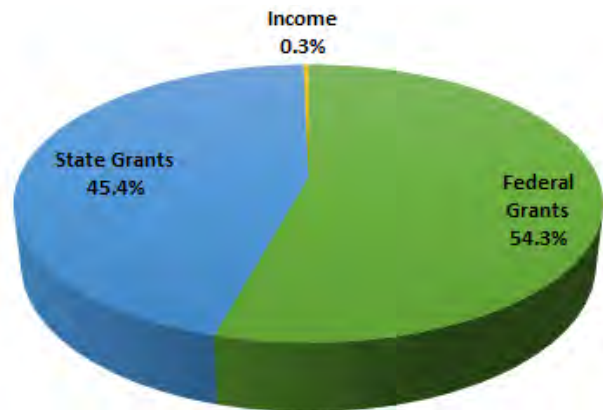
Yakama Nation

# FINANCE REPORT

Financials ending 12/31/18

## 2.3M

TOTAL REVENUE



## 95%

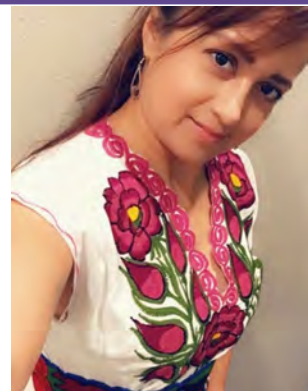
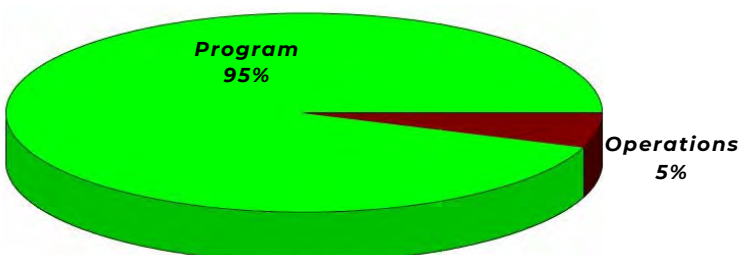
PROGRAM SERVICE EXPENSES

# FINANCE REPORT

Financials ending 12/31/19

## 2.2M

TOTAL REVENUE



**Deysi Gonzalez**

Bookkeeper & Administrative Coordinator

*Deysi has 10 years of experience in working with nonprofits in financials, business development, loan portfolio and web design*



Caribou Creek-  
gravity irrigation  
before removal of  
the structure &  
streambed  
restoration



Caribou Creek-after removal of the  
irrigation diversion dam



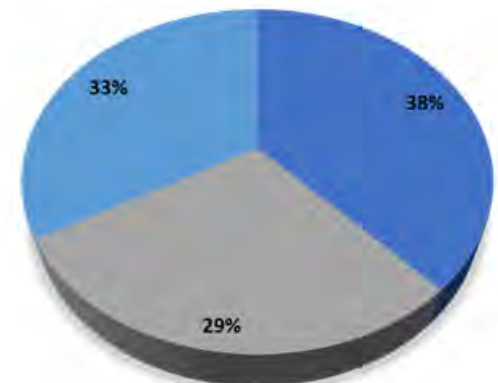
Ahtanum Creek- After  
installation of fish screen &  
grade control structure on  
irrigation ditch

## YAKIMA TRIBUTARY ACCESS & HABITAT

The Yakima Tributary Access & Habitat Program (YTAHP) provides assistance to landowners in restoring critical salmon habitat by implementing projects that protect, restore, and enhance riparian and floodplain habitat currently or historically used by salmon. Learn more at [www.washingtonrcd.org/ytahp](http://www.washingtonrcd.org/ytahp)

### Accomplishments

- YTAHP implemented 21 projects in 2019, including 8 projects to provide fish passage and 6 projects to enhance salmonid habitat on Yakima River Tributaries. YTAHP also completed significant planning, permitting and/or engineering for 7 future projects and maintenance on one previously installed project.
- The fish passage projects implement in 2019 included: screening of 2,637 acre feet (20.9 cubic feet per second) of water on streams to prevent entrapment of fish, and removing barriers on streams to provide an additional 1.7 of a miles of rearing and spawning habitat.
- The habitat enhancement projects included: 6 riparian plantings and maintenance projects, and one fencing project to protect riparian habitat.



■ Fish passage  
■ Salmonid habitat  
■ Riparian planting & maintenance

### Goals for 2020

- YTAHP plans to implement 24 projects in FY 2020, including 8 projects to provide fish passage and 7 projects to enhance salmonid habitat on Yakima River Tributaries.
- YTAHP also plans to complete significant planning, permitting and/or engineering for 9 future projects.



**Brian Miller**

YTAHP Program Manager

*Brian goal is to administer the YTAHP program as efficiently as possible to allow the implementation of the maximum number of salmon access and habitat projects with the available funding. Brian feels that another important function of YTAHP is the ability to support our YTAHP partners in their individual fish restoration efforts. YTAHP's collaborative approach is considered by many as a model for effective fish restoration activities.*

Funding from the Bonneville Power Administration (BPA) supports YTAHP activities described in this report and enables YTAHP to construct projects as well as maintain program planning and administration, support project development, including planning, design and permitting. Also conduct landowner outreach and coordination. Additionally, YTAHP participants often apply to other funding sources to enhance project implementation capabilities. These supplemental sources include: WA Department of Ecology, Washington State Conservation Commission, USFWS, Washington State Recreation and Conservation Office and other local, state and federal programs.









L: TRES participant using drip torch near Roslyn, WA

R: Learning & burning with US Fish & Wildlife Service at McNary National Wildlife area



### Cascadia Prescribed Fire Training Exchange (TRES)

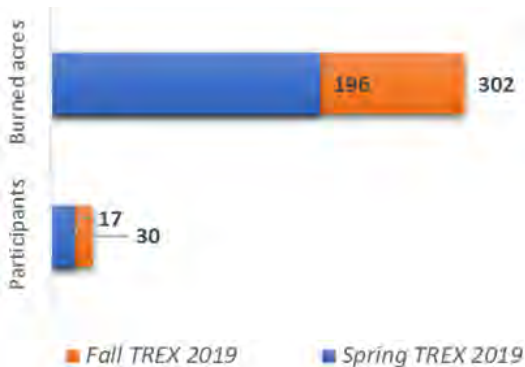
The Cascadia Prescribed Fire Training Exchange (TRES) is an intensive two-week events focused on prescribed fire training and learning. Cascadia TRES was created in partnership as a direct response to the increasing need to utilize fire as a tool to restore landscapes and reduce fire risk. Training participants receive training in specific Fireline positions but also learn about fire ecology, how to plan a burn, techniques and knowledge of weather & fire behavior, training in tools & equipment, and more. By increasing the expertise, training, and knowledge of prescribed fire practitioners in WA. And able to utilize the tool more frequently in strategic place in our landscape to protect our forests and communities. Learn more at [www.waprescribedfire.org](http://www.waprescribedfire.org)

### Accomplishments

- Since 2017, four (4) Cascadia TRES in Central WA
- First Cascadia TRES completed in Spring
- Hosted two media site visits & VIP site visits to TRES burning sites with federal Congressional staffers, state representatives, county & local city council

### Goals for 2020

- New TRES in Spring at Chewelah, WA
- Cascadia TRES continue in Fall on Central WA



### Washington Dry Forest Fire Learning Network

The Washington Dry Forest Fire Learning Network engages emerging and new strategies around landscape restoration and fire management, supports innovative projects, and increases collaborative capacity across the WA Cascades. This is co-lead with The Nature Conservancy in WA and is supported by the Fire Learning Network. Learn more [www.waprescribedfire.org](http://www.waprescribedfire.org)

### Accomplishments

- Support for the development of a report on Prescribed Burn Manager Certification programs
- Support the development of new collaborative group in Southeast WA
- Support & participate in the Climate Innovation Lab project

### Goals for 2020

- Continue support & identify innovative projects to increase capacity at landscape restoration & community fire adaptation

**Kara Karboski**  
 Fire, Landscapes, & Communities Coordinator  
*Kara coordinates and supports programs with TRES, WA Prescribed Fire Council, WAFAC Learning Network. Also projects that intersect around communities, landscapes and fire.*





In 2019, WAFAC members met for 3 days share best practices & strategies to help their communities better life with fire.

**The Washington Fire Adapted Communities Learning Network (WAFAC)**

functions to support local action, connect people to resources, and inform and influence on-the-ground projects to help Washington better live with wildfire. WRCD staff bring communities, agencies, and organizations together to develop and act on place-based strategies and priorities.

WAFAC is a partnership between community resiliency and wildfire practitioners, the WRCD, United States Forest Service, and the U.S. Bureau of Land Management. WAFAC is also supported by the national Fire Adapted Communities Learning Network

To learn more visit [www.fireadaptedwashington.org](http://www.fireadaptedwashington.org)

**WAFAC Member Accomplishments**

- 126** Educational events
- 387** Non-federal Acres treated
- 1502** Wildfire risk assessments
- 3** Completed community wildfire protection plans
- 11** Updated wildfire community protection plans



WAFAC members Flowery Trail Community Association, Lake Wenatchee's Ponderosa HOA, Forest Ridge Wildfire Coalition, and Cascadia Conservation District participated in a learning exchange to share best practices for vegetation removal and their successes and challenges in engaging secondary homeowners and partners to reduce wildfire risk.



On national Wildfire Preparedness Day, WAFAC member, Spokane County Fire District 5/Four Mound Firewise USA® hosted a defensible space workshop for 18 community spark plugs and eight Firewise USA® community leaders. Following the workshop, the participants took lessons learned and turned them into action — clearing debris and hazardous materials from around structures, removing vegetation, and placing gravel in the five-foot hazard ignition zone around homes.

**Goals for 2020**

- Ensure that Network members have the skills, materials and connections needed to achieve their fire adaptation goals
- Increase Network connections by developing new partnerships and elevating under-represented communities fire adaptation efforts within the State



**Hilary Lundgren**  
WAFAC Program Director

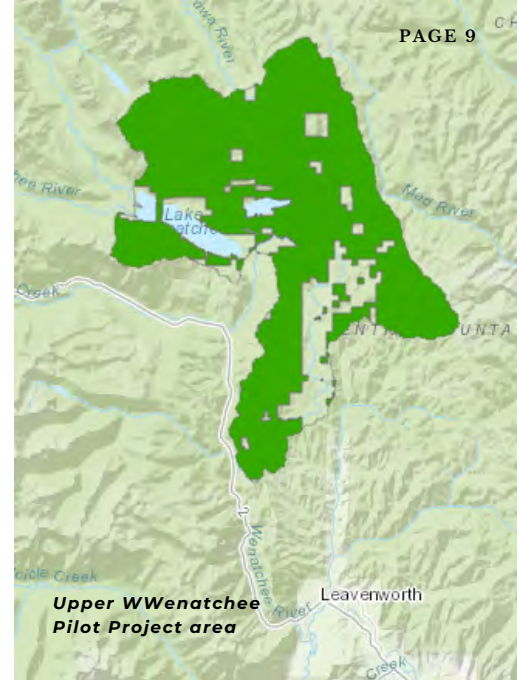


**TJ Mattingly**  
WAFAC Contracts Specialist



## UPPER WENATCHEE PILOT PROJECT AREA

In 2017, the WRC&D began working with the North Central Washington Forest Health Collaborative members and the Okanogan Wenatchee National Forest on the Chelan Fire Pilot. Chelan Fire Pilot provided funding to aid the Lake Wenatchee Fire Adapted Communities group to the WAFAC Learning Network and it funded the first Cascadia TREX. In addition, it funded the Upper Wenatchee Pilot Project (UWPP)-a contract environmental planning project on approximately 75,000 acres in the Wenatchee River Ranger District.



The goals are:

- Scientifically-sound restoration treatments, the UWPP will create a more resilient terrestrial and aquatic landscape in the Lower Chiwawa, Big Meadow, Lake Wenatchee, and Beaver Creek-Wenatchee River sub-watersheds.
- Optimize the production of ecosystem services and forest products to fulfill the stewardship mandate of the USFS in a manner that reflects a broad spectrum of ecological, cultural, and socio-economic values.
- Develop an effective model for collaboration among the USFS, other federal, state & local agencies, local Tribes, the North Central Washington Forest Health Collaborative & member organizations, as well as a wide range of local landowners, community partners and stakeholders. This effort will increase the shared leadership of the forest and watershed restoration vision and will result in greater support for all management tools needed to implement terrestrial and aquatic treatment actions on this landscape

### Accomplishments

- Completed several surveys and analyses to support this project. This includes surveys for Northern Spotted Owls, LiDAR Data Acquisition, Common Stand Exam Surveys, and aquatic habitat assessments.
- Continue support Lake Wenatchee Fire and Rescue to implement risk reduction in the Wildland Urban Interface near the project area.
- The first phases of NEPA planning have been completed and we are working with contractors and partners to complete the project in 2020

### Goals for 2020

- Complete assistance to residence and landowners in the Wildland Urban Interface of the project area
- Complete analyses and documentation of the Environmental Analysis to make decision related to forest & aquatic restoration

The Upper Wenatchee Pilot Project is funded through an agreement with the United States Forest Service Okanogan Wenatchee National Forest. Several partners are providing cash and in-kind match to the project including the Upper Columbia Salmon Recovery Board, Conservation Northwest, Chelan County, Lake Wenatchee Fire and Rescue, Yakama Nation Fisheries Program, Washington Department of Natural Resources, and many others.

## FISCAL SPONSORSHIPS

The RC&D has proven experience in providing assistance various local and statewide collaborative groups. We currently provide fiscal sponsor services to a variety of local coalitions and projects. As an insured 501(c)3, the services we provide are: being a grant applicant and recipient, hiring temporary staff, providing funding administration services, holding contracts and more. Learn more on <https://www.washingtonrcd.org/fiscal-sponsorship-overview>

### Washington Prescribed Fire Council

Since 2012, the RC&D has managed funds for the Washington Prescribed Fire Council. Kara Karboski is the RC&D's lead for helping the WPFC work to protect, conserve, and expand the safe use of prescribed fire in our state.

The Washington Prescribed Fire Council introduced the Prescribed Fire Training Exchange in Washington, completed a new strategic plan, and supported other work relevant to its mission. Learn more <http://waprescribedfire.org/>



### Kittitas Fire Adapted Communities Coalition

A coordinated movement to increase community resiliency to wildfire by providing education, planning, and technical assistance for implementing activities with the people that live, work, and recreate in Kittitas County.

In 2019, KFACC was awarded the Puget Sound Energy Powerful Partner award, they completed a mapping portal that helps residents develop their own fire risk reduction plan, and they brought people together throughout the year to increase action for better fire outcomes. Learn more on <https://www.facebook.com/KittitasFACC>



### Oregon Prescribed Fire Council

The WRC&D became the fiscal sponsor for the Oregon Prescribed Fire Council in 2018. The OPFC was able to utilize about \$10,000 for developing a new strategic plan, convening an annual meeting, and is now able to receive donations. Learn more on <https://oregonrxfire.weebly.com/>



### Chumstick Wildfire Stewardship Coalition

The "Chumstick's" mission "To build a landscape, community and culture adapted to fire." They demonstrated a grass roots commitment to their work this year with several projects. One project, a communities fuel reduction project at Snowbird Lane in Leavenworth activated volunteers and community members to reduce hazardous fuel on an elderly landowners property. Projects like this, and big projects in the Chumstick Creek Watershed like the Spromberg Canyon fuels reduction project are funded by myriad federal, state, and private contributors. Learn more on [www.chumstickcoalition.org](http://www.chumstickcoalition.org)







# CONTRIBUTORS & PARTNERS

## CONTRIBUTORS

- Bonneville Power Administration
- WA Department of Ecology
- US Fish & Wildlife Service (USFWS)
- WA State Conservation Commission
- WA State Recreation & Conservation
- Other local, state and federal

## YIAHP

## PARTNERS

- Benton Conservation District
- Mid-Columbia Fisheries Enhancement Group
- Kittitas County Conservation District
- Kittitas Conservation Trust
- North Yakima Conservation District
- WA Department of Fish & Wildlife (WDFW)
- Yakama Nation

## TAPASH & UPPER WENATCHEE PILOT PROJECT

## CONTRIBUTORS

- United States Forest Service (USFS)\*
- WDFW
- WA Dept of Natural Resources (DNR)\*
- The Nature Conservancy (TNC)

## PARTNERS

- Cascadia Conservation District\*

## PARTNERS

- Tapash 72 engaged partners & private landowners
- Chelan County Dept of Natural Resources\*
- Chumstick Wildfire Stewardship Coalition(CWSC)\*
- Lake Wenatchee Fire & Rescue\*
- North Central WA Forest Health Collaborative\*
- TNC\*, USFS\*, WA DNR\*
- Yakama Nation & Fisheries program\*

## CASCADIA IREX & WAFAC

## CONTRIBUTORS

- Bureau of Land Management(BLM)
- USFS
- USFWS
- TNC
- The Watershed Research & Training Center (WRTC)
- WA DNR

## PARTNERS

- Ashland Fire & Rescue
- BLM, TNC, USFS, USFWS, WADNR, WDFW
- Cascadia Conservation District
- CAFE
- Center of Natural Lands Management
- Chelan County Emergency Management
- Chelan County Fire District 1 (CCFD 1)
- CCFD 3
- Chelan-Douglas Health District
- Chumstick Wildlife Stewardship Coalition
- City of Roslyn
- Cle Elum Fire Department
- Confederated Tribes of Colville Reservation
- Congresswoman Kim Shrier's Office
- Department of Ecology
- Federal Emergency Management Agency (FEMA)
- Fire Learning Network (FLN)
- Flowery Trails Community Association
- Four Mound/Spokane Co. Fire District 5
- Forest Ridge Wildfire Coalition
- Grindstone Environmental
- Join Base Lewis-McChord
- Kittitas County Conservation District
- Kittitas County Fire District 1 (KCFD1)

## PARTNERS

- KCFD 4, KCFD 6, KCFD 7
- Kittitas Fire Adapted Communities Coalition (KFACC)
- Lake Wenatchee Fire Adapted Communities
- Lake Wenatchee Fire & Rescue
- Latino Community Fund
- Mt Adams Resource Stewards (MARS)
- National Fire Adapted Communities Learning Network
- National Park Service
- NE Washington Forestry Coalition
- NOAA, NRCS, NWFIC
- North Central WA Forest Health Collaborative
- Okanogan County Long Term Recovery
- Okanogan Conservation District
- Parque Padrinos
- Project Wildfire, Roslyn Fire Department
- Sachamama
- San Juan Islands Conservation District
- Seattle City Light
- Southern Oregon Forest Health Collaborative
- Sustainable Northwest
- Tapash Sustainable Forest Collaborative
- The Methow Conservancy
- WRTC, WASLA
- USARMY
- Umatilla NF, University of Washington
- WA Conservation Commission
- WA Department of Commerce
- WA Prescribed Fire Council
- Washinton EMD, Wildland Fire Advisory Committee
- Yakima Chamber of Commerce, Yak Valley FAC
- Yakima Fire Marshall's Office
- Yak Training Center, Yak Greenway Foundation
- Yakama Nation